

PARTS OF SECTIONS 11, 12, 13, 14, T. 6 N., R. 3 E., S. L. B. & M.  
**CAUSEY ESTATES SUBDIVISION NO. 3**  
 LOTS 127-131

91

TAXING UNIT 58

IN WEBER COUNTY

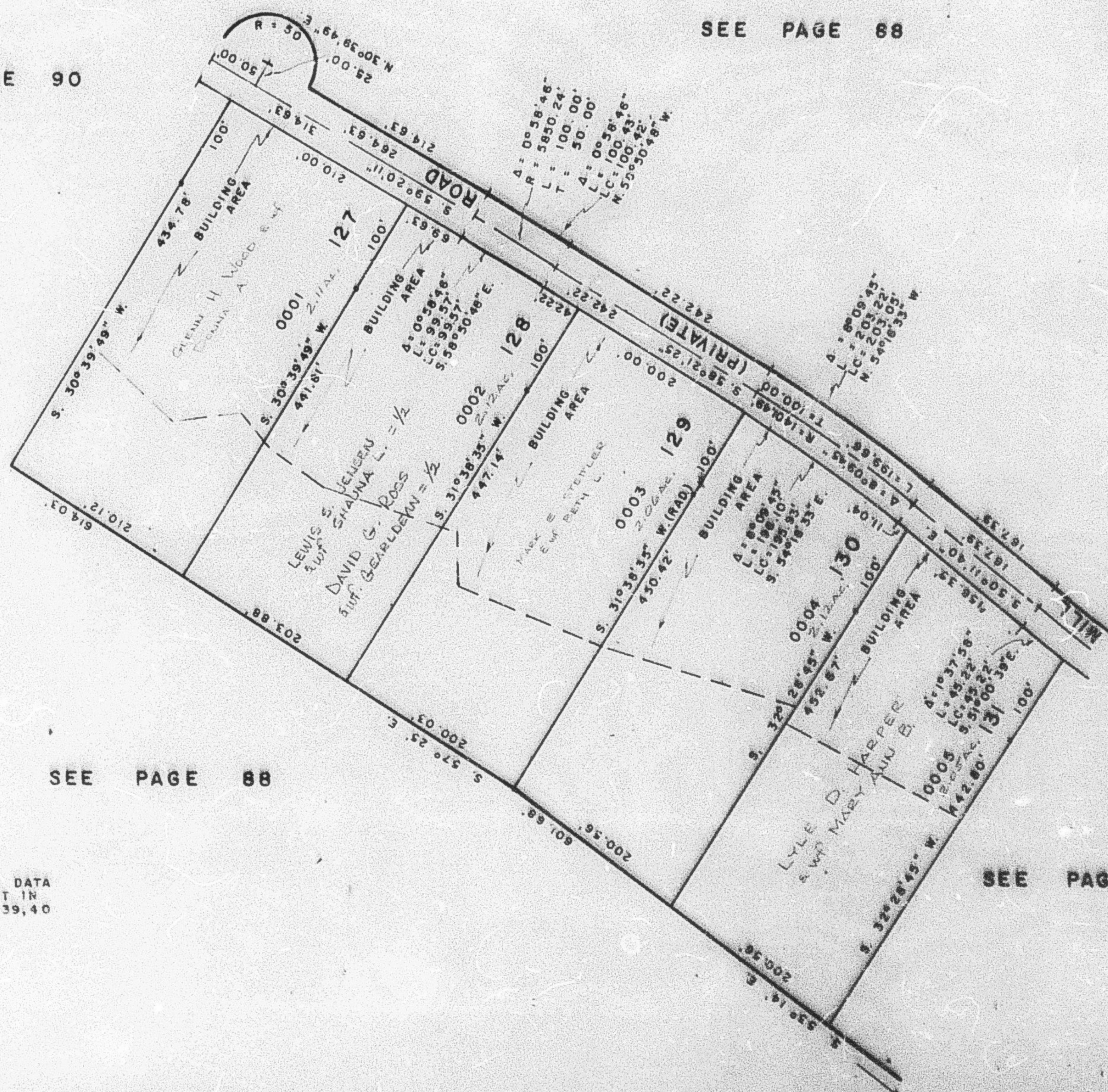
SCALE 1" = 100'

PREFIX 23-091

EXCEPT WHERE OTHERWISE SHOWN  
 ALL LOTS OWNED BY  
 BASIN LAND DEVELOPMENT CO.

SEE PAGE 90

SEE PAGE 88



SEE PAGE 88

SEE PAGE 92

FOR COMPLETE ENG. DATA  
 SEE ORIG. DED. PLAT IN  
 BOOK 24, PAGES 38, 39, 40